

Operating Manual For Evolve Remote



1 Induction

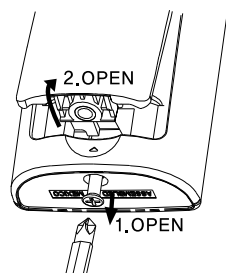
This remote control is designed to operate the DISH Evolve set-top box and TVs.

2 Replacing Batteries

Before you program or operate the remote control, you must install two new AA alkaline batteries.

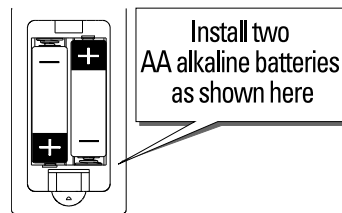
STEP 1

Remove the battery compartment cover from the back of your remote control by unscrewing the bottom screw.



STEP 2

Check battery polarity carefully, and install the batteries as shown in the illustration below.



STEP 3

Replace the battery compartment cover.

3 Button Functions

TRANSPORT

Selects items to control the playback of what is being viewed.

BACK

Return Back One Screen/Exit Apps.

OK

Selects highlighted screen options.

i

Additional Program Info.

G

Jump to Google Search Screen.

VOL +/-

Raises or lowers the sound level.

MUTE

Silences the audio. Press to activate. Press this key again to restore sound to previous level.

sling

Launch SlingTV App.

SAP

Enable SAP.

POWER

Designed to send Power On/Off command for STB or TV.

MENU

Jump to WatchTV Main Menu.

GUIDE

Jump to WatchTV Guide/EPG.

NAVIGATION

Highlight an item from the on-screen choices.

PREV CH

Access list of previous channels watched.

CH/PG Up/Down

Selects the next higher or lower channel or PG up/down while in the guide.

YouTube

Launch YouTube App.

NUMBER PAD

Enter numbers to tune to channels. Also make numeric entries on on-screen menus. You can also use the CH/PG Up/Down and the guide as alternate ways to change channels.

CC

Enable/Toggle CC Options.

4 Programming the Remote Control

A. Quick Set-Up Method

(Refer to the below Quick Set-up table of codes)

TV

Quick Number	Manufacturer/Brand
0	SANYO
1	SONY
2	SAMSUNG
3	LG
4	TOSHIBA
5	PANASONIC
6	PHILIPS
7	HITACHI
8	SHARP
9	VIZIO

STEP 1

Turn on the TV.

STEP 2

Check the number button assigned to your TV brand as shown in the table (e.g. for Sharp TV, button 8).

STEP 3

Point the remote control at the component.

STEP 4

Press and hold both the [SAP] and [NUM] buttons simultaneously for 3 seconds, the component should turn off.

Release the [SAP] and [NUM] buttons, POWER LED will blink twice to confirm that the code is stored.

(If the TV does not turn off, release the [SAP] and [NUM] key and use the Pre-Programmed 3-Digit code Method or Auto Search Method.)

B. Manual Programming

The remote control can be programmed by entering a three-digit code number that corresponds to particular brands and models of equipment. The three-digit code numbers are listed in the Set-Up Code Tables sections of this instruction manual.

STEP 1

Power on the TV you will control with the remote.

STEP 2

Press the [SAP] button and the [OK] button simultaneously for 3 seconds. The POWER LED will turn on indicating that it is ready to be programmed. The LED will remain on for 30 seconds. The next step must be entered while the LED is on.

STEP 3

Point the remote control toward the TV and enter the three-digit code number assigned to your brand from the code tables. If there is more than one three-digit number listed for your brand, try one code number at a time until your equipment turns off.

**Note: You can verify that you have selected the correct code by pressing the [POWER] button. The equipment should turn back on. Then try*

all of the functions on the remote control (i.e. volume, mute, etc.) to ensure you have the correct code. If any of the functions do not operate as they should, repeat the instructions from STEP 3 using the next three digit code number from the brand list.

STEP 4

Store the three-digit code by pressing the [SAP] button once again. The POWER LED will blink twice to confirm that the code has been stored.

C. Auto Search Method

If none of the three digit code numbers assigned to your brand of equipment works, or the code table does not list your brand, you can use the Auto Search Method to find the correct three-digit code number for your equipment by following steps:

STEP 1

Power on the TV you will control with the remote.

STEP 2

Press the [SAP] button and the [OK] button simultaneously for 3 seconds. The POWER LED will turn on indicating that it is ready to be programmed. The LED will remain on for 30 seconds. The next step must be entered while the LED is on.

STEP 3

Press the [CH▲] or [CH▼] button

one at a time or keep it pressed. The remote will emit a series of Power ON/OFF code signals. Release the [CH▲] or [CH▼] button as soon as the equipment turns off.

**Note: You can verify that you have selected the correct code by pressing the [POWER] button. The equipment should turn back on. Then try all of the functions on the remote control (i.e. volume, mute, etc.) to ensure you have the correct code. If any of the functions do not operate as they should, repeat the instructions from STEP 3 above to continue the Auto Search Method.*

STEP 4

Press the [SAP] button to store the code. The POWER LED will blink twice to confirm that the code has been stored.

D. The Learning Method

STEP 1

Press the [CC] button to be programmed and the [MUTE] buttons simultaneously for 3 seconds until the LED light turns on.

STEP 2

Point the remote at the other remote, head-to-head, 2 or 3 inches apart.

STEP 3

Press the button on the remote to which you want to teach a command. For example, press the [MUTE] button

to learn a command to the [MUTE] button.

STEP 4

Press and hold the button on the other remote that corresponds to the command you want to teach until the LED light blinks twice.

**Note: The LED will blink 5 times if there was an error in the learning process. Repeat STEPS 3 and 4 if this occurs. Continue learning other buttons by repeating STEPS 3 and 4.*

STEP 5

Once you have completed teaching the remote all desired commands, save the learned commands by pressing the [CC] and [MUTE] buttons simultaneously until the LED blinks 3 times. Now test all of the buttons to make sure they operate correctly.

E. Erasing a Single Learned Command

STEP 1

Press the [CC] and [MUTE] buttons simultaneously for 3 seconds until the LED light turns on.

STEP 2

Press and hold the button you want to erase for 3 seconds. The LED will blink twice to confirm the erasure.

STEP 3

To exit, press and hold both the [CC] and [MUTE] buttons simultaneously

until the LED blinks 3 times.

F. Erasing All Learned Commands

STEP 1

Press the [CC] and [MUTE] buttons simultaneously for 3 seconds until the LED light turns on.

STEP 2

Press and hold both the [CC] button and the [PLAY/PAUSE] button for 3 seconds. The LED will blink twice to confirm the erasure.

STEP 3

To exit, press and hold both the [CC] and [MUTE] buttons simultaneously.

G. Programming POWER and Volume Control

By default the POWER, Vol+, Vol-, and MUTE keys issue Evolve set-top box codes rather than TV codes. If you would like the remote to issue the respective TV codes instead, follow these steps.

STEP 1

Press the [OK] button and [SAP] button simultaneously for 3 seconds. The POWER LED will turn on for 30 seconds. The next step must be performed while the LED is on.

STEP 2

Press the [VOL+] button. The POWER LED will blink once.

STEP3

Press the [SAP] or [CC] button corresponding to the device that you would like the volume and mute buttons to control. The POWER LED will blink twice to confirm the programming.

**Note : If you wish to have the Power, volume and mute keys operate the Evolve set-top box, press the [CC] button in Step 3. Operate your TV, press the [SAP] button in Step 3.*

H. Factory Default

To restore remote to its factory settings, follow these steps:

STEP1

Press and hold the [BACK] button and the [SAP] button for 5 seconds.

STEP2

The POWER LED will blink 3 times quickly to show the procedure is successful.

I. Memory Lock System.

This remote control is designed to retain programmed memory for 10 years — even after batteries are removed from the remote control.

For additional information about your remote control, go to www.dish.com/business/hotels/

5 Set-up Code Tables**TV**

Manufacturer/Brand	Set-Up Code Number
ADMIRAL	072 081 160 161 096
AD NOTAM	672
ADVENT	147 224
AFFINITY	680
AIWA	238 141 145
AKAI	031 070 146 004 148 124 226 104 108 615
AKIO	103
ALARON	028
ALBATRON	253
AMARK	112 127
AMERICA ACTION	043
AMERICAN HIGH	236
AMPRO	073 167 245
ANAM	043 054 056 080 112 236
AOC	058 070 004 112 616
APEX	572
APEX DIGITAL	015 150 036 037 424
AQUAVISION	164 686
ASTAR	164
AUDIOVOX	076 103 043 035 224 228 078
AVION	223
AUVIO	689
AXESS	711
AXION	043
BAYSONIC	043
BELL&HOWELL	072
BENQ	600
BRADFORD	043
BROKSONIC	231 252 096 170
BYDESIGN	254
CAIRN	162
CANDLE	070 002 003 004
CANON	236

TV

Manufacturer/Brand	Set-Up Code Number
CAPEHART	058
CARVER	164
CELEBRITY	001
CETRONIC	043
CIELO	101
Ciil	732
CINERAL	103 120
CITIZEN	070 002 003 004 101 103 127
CLASSIC	043
COBY	640 641 671 004
CONCERTO	004
CONTEC	043 051
CORONADO	127
CRAIG	043 054 028 239
CROSLEY	164
CROWN	043 127
CURTIS MATHES	070 004 101 127 236 011 072 081 120 164
CXC	043
DAEWOO	076 103 112 004 127 016 043 044 125 120 235 249
DAYTRON	004 127
DELL	004 041 164 618
DENON	011
DIGITAL LIFESTYLE	163
DIGITAL PROJECTION	570
DIGITAL RESEARCH	258
DIGITRON	101
DISNEY	096
DREAMVISION	090
DUMONT	004 073
DURABRAND	168
DWIN	131 132 161
DYNASTY	043
DYNATECH	062 238
DYNEX	096

TV

Manufacturer/Brand	Set-Up Code Number
ELECTROBAND	001
ELECTROGRAPH	220
ELECTROHOME	024 076 127
ELEMENT	004 110 622 690
EMERSON	005 028 043 048 076 096 155 004 051 127 151 153 154 231 236 238 247 252 168 121 514
ENVISION	070
EPSON	087 590
ESA	031 168
FISHER	007 057
FREEMOTION	662
FUJITSU	164 197 028 157 149 066 217
FUNAI	028 043 238 052 168
FUSION	004
FUTURETECH	043
GATEWAY	165 031
GE	070 073 130 144 160 161 004 008 009 034 056 074 091 155 232 233 236 239 245 081 120
GEM	031
GIBRALTER	004 073
GO VIDEO	239
GOLDSTAR	004 106 112 127 247 250
GPX	256 674
GRUNPY	028 043
H&B	046
HAIER	004 116 623
HALL MARK	004
HANNSPREE	099
HARLEY DAVIDSON	028
HARSPER	220
HARMAN KARDON	164
HARVARD	043
HISENSE	198 021 619 630 004

TV

Manufacturer/Brand	Set-Up Code Number
HITACHI	011 007 009 004 072 010 012 023 075 127 158 236 238 587 613 614
HP	027 039 098
HQ	238 046
HUMAX	122
HYPERION	609
HYUNDAI	049 067
ILO	055 096
INFINITY	164
INFOCUS	215 225 046 532 595 726 733
INKEL	129
INSIGNIA	068 069 078 096 100 164 168 229 026 454 604 617
INSTANTREPLAY	236
INTEQ	073
JBL	164
JCB	001
JCL	236
JCPENNEY	004 008 024 030 065 070 101 127 160 156 234 236 239 247
JENSEN	013
JVC	038 001 034 083 195 236 242 159 227 581 668
KENWOOD	070 001 238
KLEGG	220
KLOSS	002 059
KONKA	026
KREISEN	202
KTV	070 043 127 154
LG	004 106 112 127 247 250 569 598 698 648 741
LLOYD	238
LODGENET	072
LOEWE	196 164 738
LOGIK	072
LUXMAN	004

TV

Manufacturer/Brand	Set-Up Code Number
LXI	007 015 052 081 160 164 238
MAGIN	239
MAGNAVOX	070 003 004 022 059 060 061 063 064 127 164 094 160 056 236 238 243 205 028 138 168 035 211 077 050 218 594
MAJESTIC	072
MARANTZ	164 070 236 243 182 584
MARTA	247
MATSUI	164
MATSUSHITA	080
MAXENT	165
MEGAPOWER	253
MEGATRON	004
MEI	236
MEMOREX	004 007 072 234 236 238 245 247 028 096
METZ	088
MGA	024 070 004 042 239
MIDLAND	073
MINERVA	088
MINTEK	077
MINUTZ	008
MITSUBISHI	109 024 042 004 040 146 028 232 255 081 200 450 550
MONIVISION	253
MOTOROLA	081
MTC	070 004 062 101 238 239
MULTITECH	238 043
NAD	015 025
NEC	070 130 134 040 056 007 019 024 004 182 140 575 717
NEXUS	620 078
NIKEI	043
NIKKO	103
NIKO	175

TV

Manufacturer/Brand	Set-Up Code Number
NORCENT	211
NORWOOD MICRO	079
NTC	103
NUVISION	084 567 667
OLEVIA	219 004 161 144 160
ONKING	043
ONWA	043
OPTIMUS	080
OPTOMA	029 032
OPTONICA	019 081
ORION	096 201 203 204 205 231 252 028
PANASONIC	080 034 056 164 234 236 244 190 230 248 524 624 607 664
PEERLESS-AV	723
PENTAX	236
PHILCO	070 003 004 024 056 059 060 063 064 127 164 236 238 243 064 127 164 236 238 243
PHILIPS	164 005 093 038 127 070 003 004 059 236 238 243 247 199 218 144 161 594
PILOT	247
PIONEER	023 025 135 176 004 018 070 183 191 208 214 182 660
PLANAR	728
POLAROID	015 024 031 046 086 092 097 224 228 006 110 026 118 119
PORTLAND	004 127 103
PRISM	034
PRIMA	147 164
PROSCAN	144 160 161 167 004
PROTON	004 058 127 171 173 193 163
PROTRON	102 213 004 115
PROVIEW	110
PROX	572
PYLE	257
PYLE HOME	661 662

TV

Manufacturer/Brand	Set-Up Code Number
QUASAR	034 056 234 236 244 606
RADIO SHACK	004 019 127 043 250
RCA	160 161 144 156 065 070 004 023 024 056 074 152 232 233 236 238 239 081 588 713
REALISTIC	007 019 236 238 239 247
REVOLUTION HD	220
RICO	241
RUNCO	072 073 130 179 180 181 182 216 194 697 696
SABIO	161
SAMPO	070 004 058 165
SAMSUNG	192 089 004 101 127 133 160 105 070 237 239 184 185 461 578 655
SANSEI	120
SANSUI	238 252 096 615 454
SANYO	007 020 053 057 082 239
SCEPTRE	036 699
SCOTCH	004
SCOTT	004 005 028 043 048 127 113
SEARS	004 007 015 028 030 057 082 094 127 160 238 247 052 164
SEIKI	690
SELECO	189
SEMIVOX	043
SEMP	015
SEURA	704
SHARP	251 019 014 081 028 004 022 127 236 496 684 692 735
SHERWOOD	129 128
SIGNATURE	072 238
SKYWORTH	164
SOLE	177 178
SONY	001 608 651 126 139 236 240 241 602
SOUNDESIGN	003 004 028 043 238

TV

Manufacturer/Brand	Set-Up Code Number
SOVA	004 169 174
SOYO	163
SPECTRICON	112
SPECTRONIQ	004
SQUAREVIEW	052
SSS	004 043
STARLITE	043
SUNBRITE	608 001 635
SUNBRITE TV	605
SUPERSCAN	168
SUPRE MACY	002
SUPREME	001
SV2000	168
SVA	046
SYLVANIA	070 003 052 059 060 063 064 127 160 164 044 056 236 238 243 168 121 593
SYMPHONIC	052 238 168
SYNTAX OLEVIA	219 004 161 144 160
TANDY	081 238
TATUNG	056 062
TCL	705
TEAC	238
TECHNICS	034 080 236 244
TECHNOL ACE	028
TECHVIEW	246
TECHWOOD	004
TEKNIKA	002 003 004 024 028 043 072 101 127 103 236 238 247 164
TELEFUNKEN	615
TELERENT	072
TERA	172

TV

Manufacturer/Brand	Set-Up Code Number
THOMPSON	166
TILEVISION	663
TNCI	073
TMK	004
TOSHIBA	015 030 007 040 062 101 142 137 045 703
TOTEVISION	127 239 247
TRUTECH	212
UNITECH	239
UNIVERSAL	008 009
UPSTAR	708
VENTURER	004 721
VIDEO CONCEPTS	146 238
VIDEOSONIC	239
VIDIKRON	188 164 182
VIDTECH	004
VIEWSONIC	210 720
VIORE	055 592
VISCO	209 110
VITO	004
VIZIO	682 031 724 004 603 625 675
WARDS	004 064 164 008 009 019 028 060 061 063 072 074 127 070 236 238 239
W Box Technologies	609
WESTINGHOUSE	076 036 221 222 001 690 101
WINBOOK	079
YAMAHA	004 070 238 206 207
YORK	004
YUPITERU	043
ZENITH	011 072 073 095 103 238 241 245 247 096
ZONDA	112